

King's Ford Academy SEND & Inclusion Newsletter



New Projects 2024.2025:

- In the new academic year we will be working with **Paxman Academy** and sharing practice from '**Ordinarily Available**' (**Inclusive Teaching Framework**). This will enhance our classroom practice. Our first focus will be our '**Learning Environments**'. This was delivered during our staff INSET day
- We are also involved with a new pilot project aimed at increasing inclusivity in school and building relationships and communication with parents/carers. **The name of this project is Partnership for Inclusion of Neurodiversity in Schools (PINS).**
- King's Ford Academy is now part of the Multi School's Council (MSC).

Welcome to our SEND and Inclusion newsletter!

Date: November 2024

Issue: No 5

The aim of the SEND and Inclusion Newsletter is to inform parents and staff about areas of SEND and to make SEND and inclusion a key priority in our school. If you have any questions regarding things posted in the Newsletter please speak to me.

Louise Harris—SEND CO

Important Dates To lookout for:



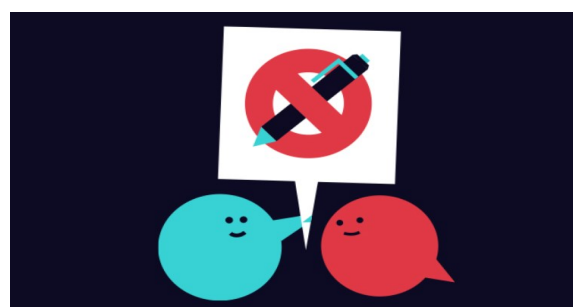
27.11.24—NO Pens Day—More information to follow (from the children of the School council/ Multi School Council)

3.12.24—Multi School Council Meeting—King's Ford Hosting

Multi Schools Council

The Multi Schools Council was started in 2012 to help break down perceptions towards children with SEND and mental health difficulties in schools and their wider communities.

We are excited to host the next council meeting at King's Ford Academy. I best get the juice and biscuits ready!



King's Ford Academy SEND & Inclusion Newsletter



Events arranged via the PINS Project:

- Wednesday 13th November - Our school will have a **Sensory audit**. The information and outcome will be shared with you in the December SEND newsletter.
- Wednesday 4th December - Our school will have a **communication and language audit**. The information and outcome will be shared with you in the December SEND newsletter.
- Tuesday 14th January 1.30pm—3.00pm - **Emotional Regulation workshop**—Parents & Staff
- Tuesday 11th February 1.30pm—3.00pm—**Barriers to Learning workshop**—Parents & Staff
- Tuesday 25th February 10am—1pm— **Autism Reality Bus**—Parents and Staff
- Tuesday 18th March 1.30pm—3.00pm— **Neurodevelopment Diversity**—Parents & Staff

This PINS project is certainly helping to shape our whole school SEND provision and support the strengthening of partnerships between school and parents/carers.

Neurodevelopment Disorders Early Support in Colchester and

Tendring— Please use these services if you are facing any concerns around ADHD/ Autism. YOU DO NOT NEED A DIAGNOSIS TO SEEK SUPPORT.



Autism Anglia
(East Anglia)

We support families with autistic children to navigate clinical and non-clinical services, including diagnosis, health, educational, social and financial support.



Telephone Number: 01206 577678
Email Address: communityconnect@autism-anglia.org.uk



Essex Child and Family Wellbeing Service
(Essex)

Our Neurodevelopmental Pathway Coordinators support ages 0-25 with neurodevelopmental conditions, such as Autism, ADHD and Dyspraxia, providing consistent individualised information, resources and support.

Telephone Number: 0300 247 0013
(Monday-Friday 9:00am - 5:00pm)



Families InFocus
(Essex)

We provide advice, support and information to families with SEND children on education, disability benefits and other areas of support. We also run weekend activity clubs in Colchester and Chelmsford for SEND children and their siblings.

Telephone Number: 01245 353575
(Monday-Friday 10:00am - 4:00pm, with 24 hour answerphone)
Email Address: helpline@ffessex.org.uk





The MAZE Group
(North East Essex)

We have a unique approach to SEND which offers insights into how children with additional needs experience the world. We have free monthly coffee mornings in Colchester, Clacton-on-Sea, Mistley and Harwich and a specialist weekly programme available online and face-to-face in Colchester, Clacton and Harwich.

In addition, we offer the programme in a video series as well as a course on navigating the SEND system. We also provide specialist support for parents who have additional needs. Our aim is to guide, advise and support you for as long as you need us.

Telephone Numbers: 07809 900161 or 07708 873023
Email Addresses: amanda.towns@themazegroup.co.uk
sue.anderton@themazegroup.co.uk



Essex Family Forum
(Essex)

We are a Parent Carer Forum (PCF) which ensure services in their area meet their needs and improve outcomes of children and young people with special educational needs and disabilities (SEND) and their families. Share your experiences via our online Graffiti Wall on our website or email us.

Email Address: hello@essexfamilyforum.org

Supporting Your Neurodiverse Child - Resource Pack
(Essex Family Forum)

Supporting Your Neurodiverse Child is a pack that is available to all parents and carers and includes information about Neurodiversity, the diagnostic process, information on support for your child at school, sensory needs, emotional regulation, health and wellbeing and much more. The pack is available to download or you can request a hard copy to be delivered to you via our website.

Email Address: hello@essexfamilyforum.org

